



### Model Number

924AB3XM-L2P

### Features

- Inductive analog
- Voltage output

## Technical Data

### General specifications

Output type	Analog voltage output
Installation	non-flush
Output polarity	DC
Measurement range	2 ... 5 mm
Output type	3-wire

### Nominal ratings

Operating voltage	$U_B$	13.5 ... 30 V
Output signal		1 ... 9 V
Reverse polarity protection		yes
Short-circuit protection		no
Repeat accuracy	$R$	$\pm 0.02$ mm
Recovery time		1 ... 20 ms
Current consumption		12 mA at 30 V DC
Load resistor		$\geq 2$ k $\Omega$

### Functional safety related parameters

MTTF <sub>d</sub>	1733 a
Mission Time (T <sub>M</sub> )	20 a
Diagnostic Coverage (DC)	0 %

### Output

Linearity	$\pm 50$ mV <sub>SS</sub> at 20 mA . 25 V DC
Output resistance	$\leq 50$ $\Omega$

### Ambient conditions

Ambient temperature	0 ... 60 °C (32 ... 140 °F)
---------------------	-----------------------------

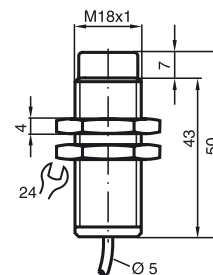
### Mechanical specifications

Connection type	cable PVC , L = 2 m
Core cross-section	3 x 0.34 mm
Housing material	brass, nickel-plated
Sensing face	Ceramic
Degree of protection	IP67

### Compliance with standards and directives

Standard conformity	EN 60947-5-2:2007
Standards	EN 60947-5-2/A1:2012
	IEC 60947-5-2:2007
	IEC 60947-5-2 AMD 1:2012

## Dimensions



## Electrical Connection

