



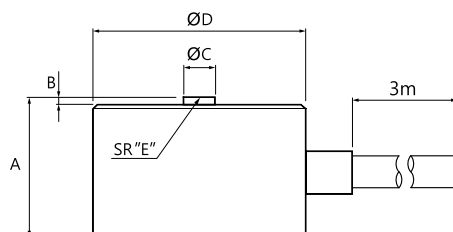
#### Feature

- Miniature Dimension
- Compression Application
- Application for Limited Space
- Protection Class IP66
- Nickel Plated Steel
- Braided Shield 4-Wire Round Cable



Rated Capacity (R.C)	kgf / tf	SM601		SM602	
		10, 30, 50, 100kgf, 1, 2tf		1, 5, 10, 30, 50, 100kgf	
Rated Output (R.O)	mV/V	1.0 ± 0.05 (1kgf, 5kgf) 2.0 ± 0.05			
Zero Balance	mV/V	0 ± 0.02			
Combined Error	%	0.15		0.1	
Repeatability	%	0.1		0.05	
Creep (30min)	%	0.05		0.05	
Temperature Effect on					
Zero Value	% / 10°C	0.01			
Output Value	% / 10°C	0.02			
Excitation					
Recommended	V	10			
Maximum	V	15			
Resistance					
Input	Ω	410 ± 30			
Output	Ω	350 ± 10			
Insulation	M Ω	> 2,000			
Compensated Temp Range	°C	-10 ~ +40			
Operating Temp Range	°C	-20 ~ +70			
Physical Weight	kg	0.3			

Model	Capacity	A	B	ØC	D	E
SM601 - 10kgf	10kgf	14	1	4	20	12.5
SM601 - 30kgf	30kgf					
SM601 - 50kgf	50kgf					
SM601 - 100kgf	100kgf					
SM601 - 1tf	1tf					
SM601 - 2tf	2tf					
SM602 - 1kgf	1kgf	18	2.5	5	35	
SM602 - 5kgf	5kgf					
SM602 - 10kgf	10kgf					
SM602 - 30kgf	30kgf					
SM602 - 50kgf	50kgf					
SM602 - 100kgf	100kgf					



Unit : mm

CABLE COLOR CODE	
EXC +	(RED)
EXC -	(WHITE)
SIG +	(GREEN)
SIG -	(BLUE, BLACK)
SHLD	(YELLOW)